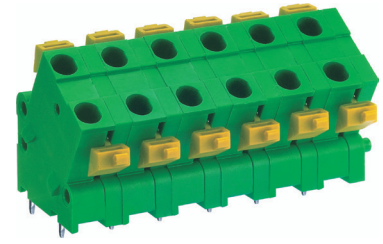
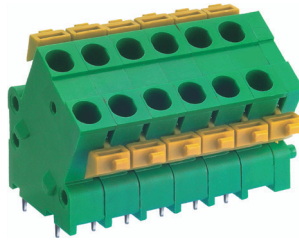


MX622 PCB Spring Type Terminal Block



DIMENSIONS/POSITIONS

	MX622-508	MX622-762
Pitch	5.08mm	7.62mm
Poles	2 ~ 24Poles	2 ~ 24Poles
Dimension A	5.08mm	7.62mm
Length	A= 5.08xP + 2.54mm(P≥2)	A= 7.62xP(P≥2)
Housing Material	PA 66	PA 66
Contact	Brass, Tin Plated	Brass, Tin Plated
Spring	Stainless Steel	Stainless Steel
Wire Size	16 ~ 22AWG	16 ~ 22AWG
PCB Hole Diameter	1.3mm	1.3mm
Operating Temperature	-40°C to +105°C	-40°C to +105°C

TECHNICAL DATA

Connection in acc. with standard EN-VDE		
Nominal Current I _N	10A	10A
Nominal Cross Section	-	-
Maximum load current	10A	10A
Insulating Material	PA	PA
Inflammability class acc. to UL94	V0	V0
Nominal voltage, UL/CUL	300V	300V
Nominal current, UL/CUL	10A	10A

