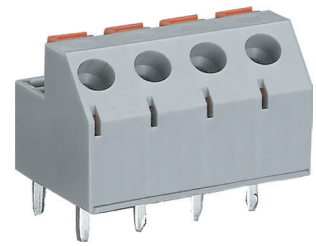
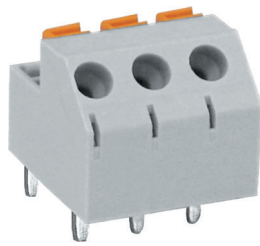
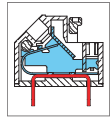


# MX832 PCB Spring Type Terminal Block



### DIMENSIONS/POSITIONS

	MX832-508	MX832-508..V
Pitch	5.08mm	5.08mm
Poles	2 ~ 24Poles	2 ~ 24Poles
Dimension A	5.08mm	5.08mm
Length	A= 5.08xP(P≥2)	A= 5.08xP(P≥2)
Housing Material	PA 66	PA 66
Contact	Brass, Tin plated	Brass, Tin Plated
Spring	Stainless Strip Steel	Stainless Strip Steel
Wire Size	14 ~ 20AWG	14 ~ 20AWG
PCB Hole Diameter	1.4mm	1.4mm
Operating Temperature	-40°C to +105°C	-40°C to +105°C

### TECHNICAL DATA

Connection in acc. with standard EN-VDE		
Nominal Current I <sub>N</sub>	12A	12A
Nominal Cross Section	-	-
Maximum load current	12A	12A
Insulating Material	PA	PA
Inflammability class acc. to UL94	V0	V0
Nominal voltage, UL/CUL	300V	300V
Nominal current, UL/CUL	12A	12A

