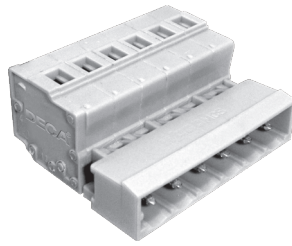
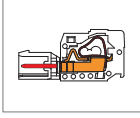


MZ700 Connector



DIMENSIONS/POSITIONS

MZ700-500

Pitch	5.00mm
Poles	2 ~ 24Poles
Dimension A	5.00mm
Length	$A = 5.00 \times P + 3.40 \text{mm} (P \geq 2)$
Housing Material	PA 66
Contact	Copper, Tin Plated
Spring	Stainless Steel
Wire Size	14 ~ 24AWG
Operating Temperature	-40°C to +105°C

TECHNICAL DATA

Connection in acc. with standard EN-VDE	
Nominal Current I_N	15A
Nominal Cross Section	-
Maximum load current	15A
Insulating Material	PA
Inflammability class acc. to UL94	V0
Nominal voltage, UL/CUL	300V
Nominal current, UL/CUL	15A

